






WELCOME

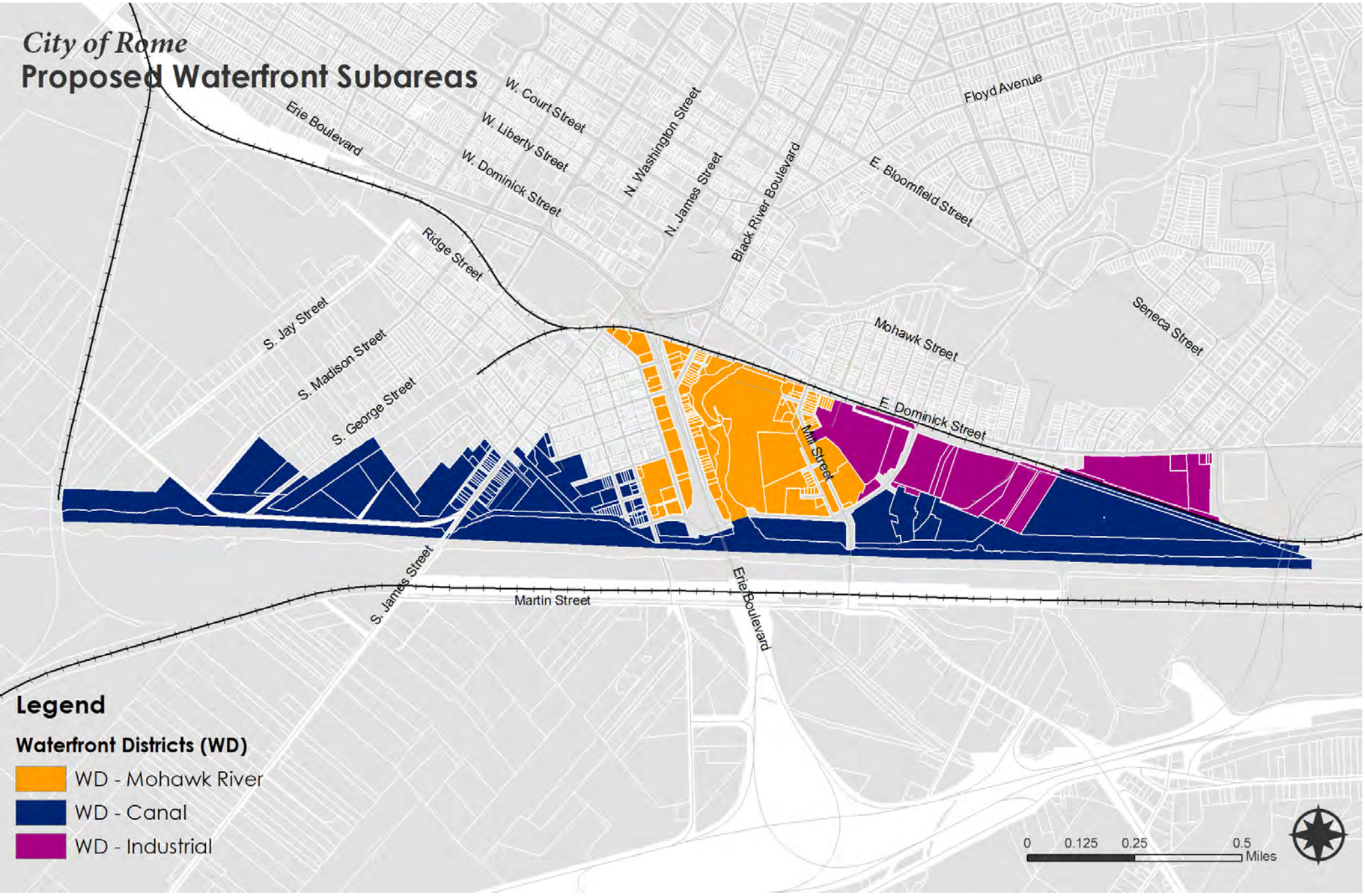
**Downtown and Erie Boulevard
Brownfield Opportunity Area | Public Meeting I**

ROME
the copper city

WHAT IS A FORM-BASED CODE?

A form-based code is a land development regulation that fosters predictable built results and a high-quality public realm by using physical form (rather than separation of uses) as the organizing principle for the code. Goals of the code include:

-  Regulates the form of land uses, rather than the use itself
-  Strong focus on design and performance
-  Developers have clear set of expectations
-  Often used to preserve or promote a certain development pattern
-  Offers flexibility



ROME'S WATERFRONT DISTRICT INCLUDES THREE SUBAREAS:



The intent of the Mohawk River Subarea is to facilitate potential recreational uses and small-scale mixed-use commercial buildings that provide a strong linkage between the waterfront, Bellamy Harbor Park, surrounding light industrial uses, and Downtown Rome.



The Industrial Subarea is meant to encourage job creation and residential uses that are compatible with surrounding areas. The Subarea encourages uses such as light industrial, research and manufacturing, niche industry, green industry, and redevelopment of warehouses.



The intent of the Canal Subarea is to accommodate a mix of residential and commercial uses in buildings that do not exceed 6 stories. Special focus is placed on creating a vibrant, walkable area that prioritizes public access to the waterfront.

ROME'S WATERFRONT DISTRICT FORM-BASED CODE WILL...

-  Encourage human-scale environments through building placement, height and size requirements. Assure that buildings are constructed near the sidewalk to create a welcoming sense of enclosure for pedestrians and drivers. Parking in front of buildings is prohibited.
-  Enhance the sense of place by allowing only durable, high quality building materials. Natural materials, such as stone, masonry, and wood.
-  Activate ground floor spaces by requiring street-facing windows and pedestrian entrances.
-  Create visual appeal with consistent signage and awnings.
-  Create a safe and inviting atmosphere with screening and lighting. Require pedestrian-oriented light fixtures at lower heights that focus light towards walking surfaces.

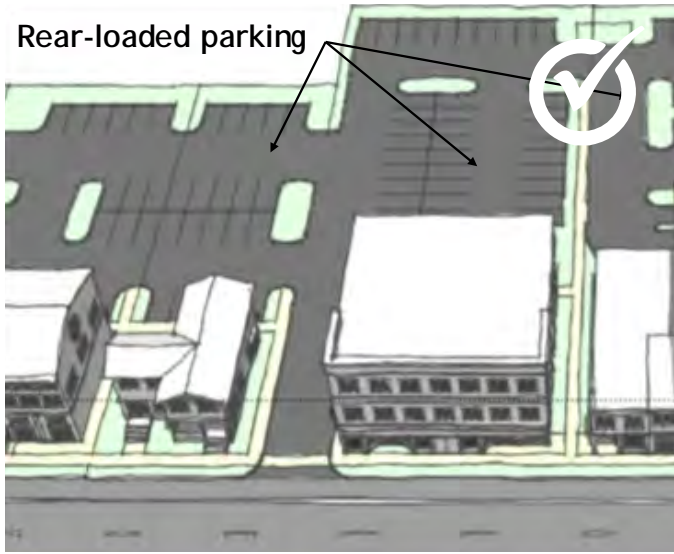
PATHWAYS



SIGNS



PARKING



AWNINGS



LIGHTING



SCREENING





ACTIVE SIDEWALKS

Sidewalks should be smooth, wide, feel safe, and have appropriate transitions to the street, making them easy for all users, including children, elderly and disabled.

DEDICATED BIKE LANES

There are various bike lane treatments that can be used to create safe, dedicated travel lanes for bicycles. Delineations between bike and motorists may increase the number of riders.

ACTIVE ROADWAYS

Complete streets accommodate all modes of transportation. Well-marked roadways and street signs help calm traffic, keep motorists aware of surroundings, resulting in safer movement for all.

SAFE CROSSWALKS

Clearly marked crosswalks allow all users to cross streets safely, while making sure cars know where to expect them.

WAYFINDING SIGNAGE

Wayfinding signage is important for motorists and pedestrians to find their way around. It improves efficiency, accessibility, and safety while reducing stress navigating an unfamiliar place.

SAFETY AMENITIES

Well-lit streets improve safety and security for drivers, riders and pedestrians. Small-scale lighting can help emphasize pedestrian activity and improve the overall character of the streetscape.

GREEN SPACES

Parks and public green spaces create a destination, encouraging community interaction and providing a rest from the surrounding urban environment.

What type of bicycle treatment would you like to see?

Place a dot next to your favorite!



Bike Boulevard



Shared Lanes



One Way Protected Lane



Designated Bike Lanes

What types of pedestrian and streetscape amenities would you like to see in the City of Rome?

Place an image sticker of the amenity below.

Effective wayfinding signage, focused on all modes of transportation, will function as the connective tissue of Downtown Rome, linking together major districts, destinations, historic sites, and trail systems. Wayfinding signage will enhance navigation of the City for both residents and visitors.

Place a sticker dot under the wayfinding sign design you like best.

VEHICULAR GATEWAY SIGN

VEHICULAR DIRECTIONAL SIGN

PEDESTRIAN DIRECTIONAL SIGN

OPTION 1 - SIMPLY COPPER

Place dot here

COMMENTS: TELL US WHAT YOU LIKE AND DON'T LIKE ABOUT EACH CONCEPT

VEHICULAR GATEWAY SIGN

VEHICULAR DIRECTIONAL SIGN

PEDESTRIAN DIRECTIONAL SIGN

OPTION 2 - SPOT ON ROME

Place dot here

COMMENTS: TELL US WHAT YOU LIKE AND DON'T LIKE ABOUT EACH CONCEPT

VEHICULAR GATEWAY SIGN

VEHICULAR DIRECTIONAL SIGN

PEDESTRIAN DIRECTIONAL SIGN

OPTION 3 - CLASSIC ELEGANCE

Place dot here

COMMENTS: TELL US WHAT YOU LIKE AND DON'T LIKE ABOUT EACH CONCEPT

VEHICULAR GATEWAY SIGN

VEHICULAR DIRECTIONAL SIGN

PEDESTRIAN DIRECTIONAL SIGN

OPTION 4 - CURVE INTO ROME

Place dot here

COMMENTS: TELL US WHAT YOU LIKE AND DON'T LIKE ABOUT EACH CONCEPT

ROME
the copper city

WAYFINDING | WHAT IS WAYFINDING?
Downtown and Erie Boulevard Brownfield Opportunity Area | Public Meeting I

BERGMANN
ASSOCIATES

Share your thoughts on what new uses you would like to see on each site (i.e. hotel, restaurant, housing. ect.).



Rome Turney: 109 Canal Street



Rod Mill: 301 Mill Street

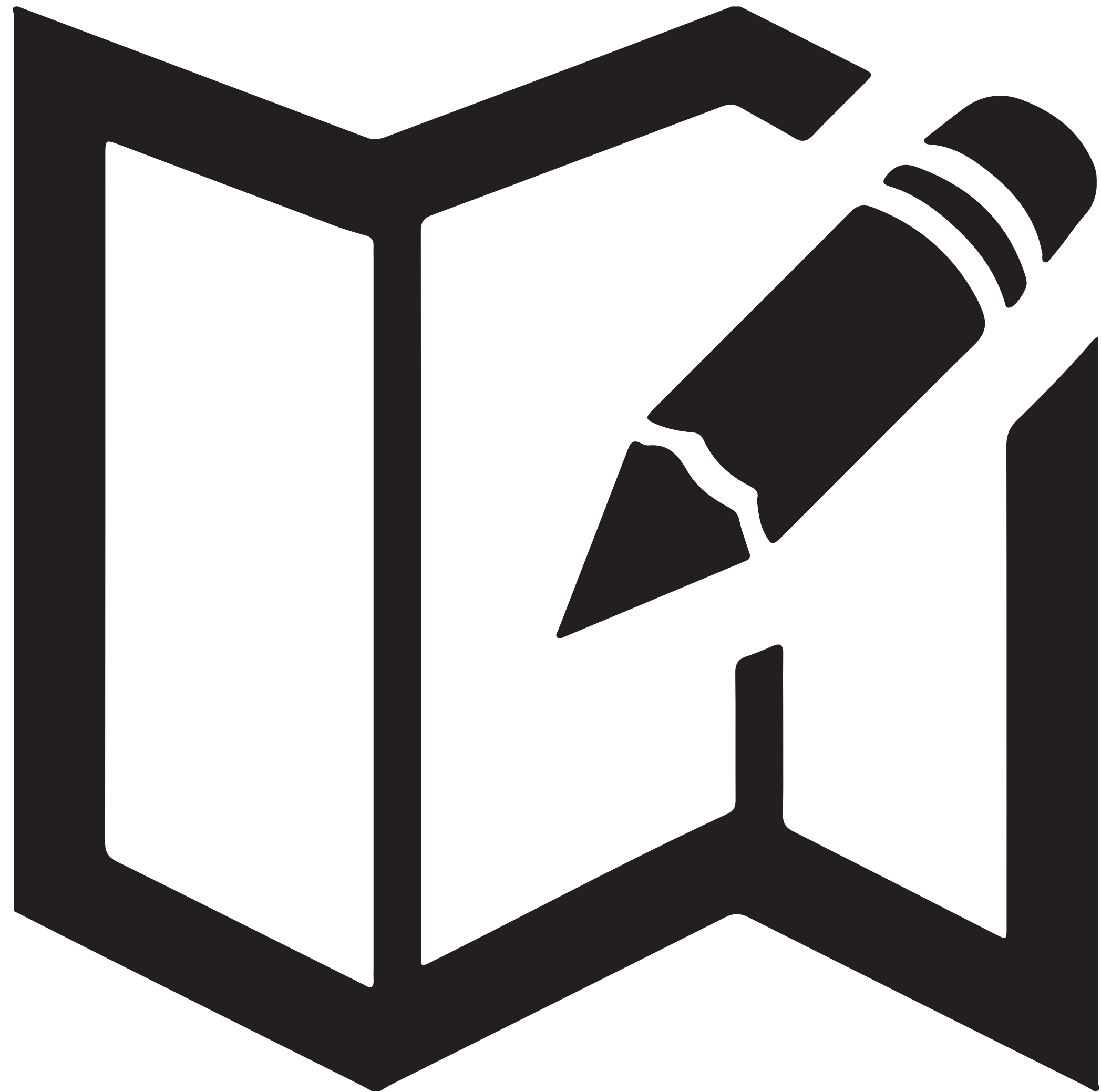


Rome Cable



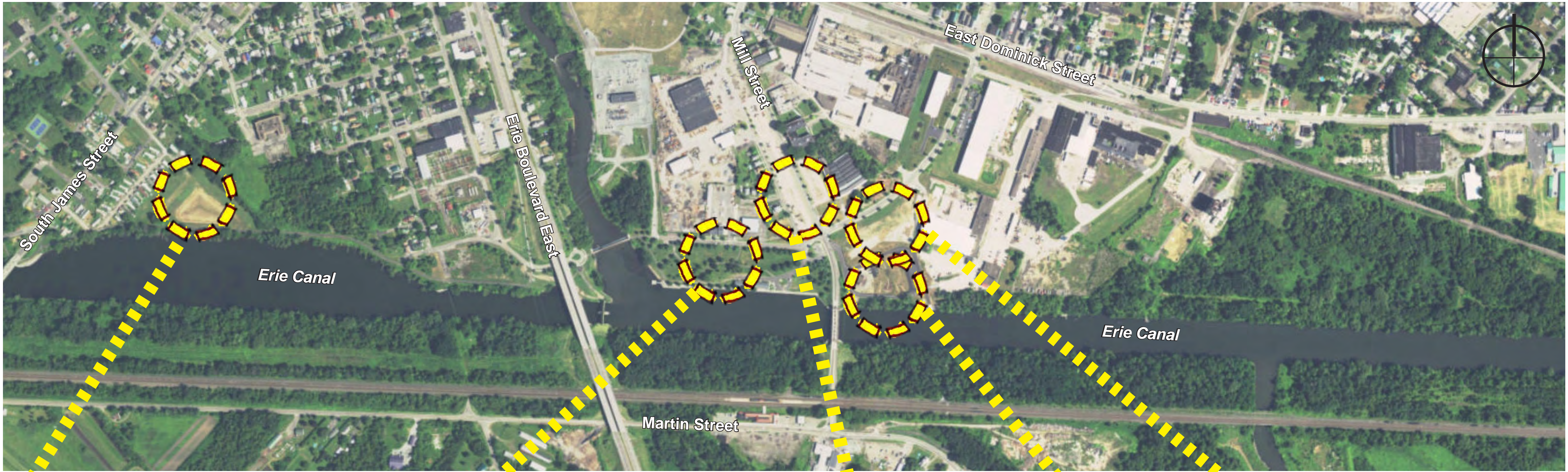
George Street Parking Garage

WATERFRONT AMENITIES INSTRUCTIONS



Help us prioritize
future investments.

Please place your "Rome
dollars" in the jar(s) that
represent the amenities
you believe future
investment should be
focused. (Maximum of \$5
per person)

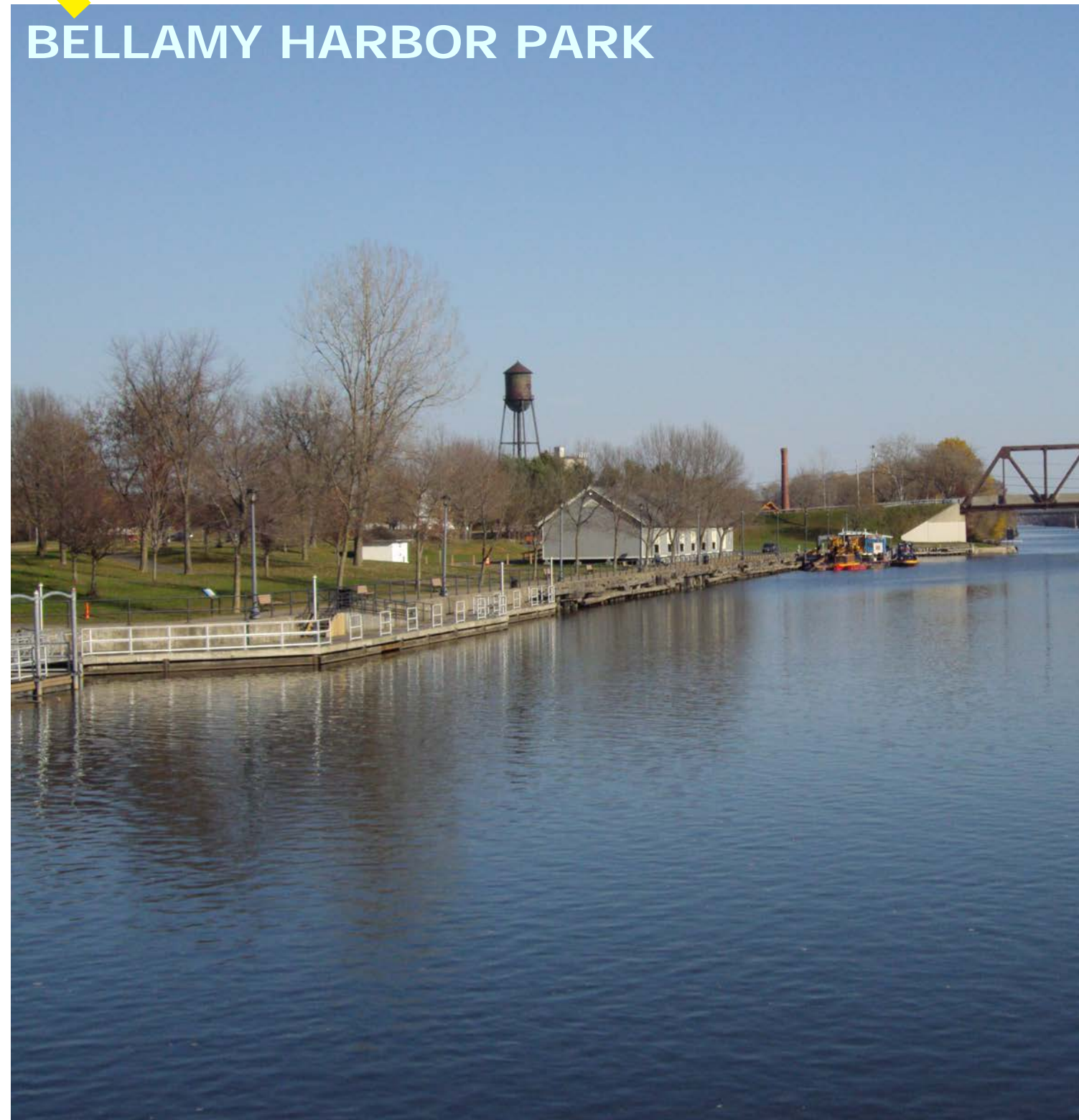


WATERFRONT VILLAGE SITE



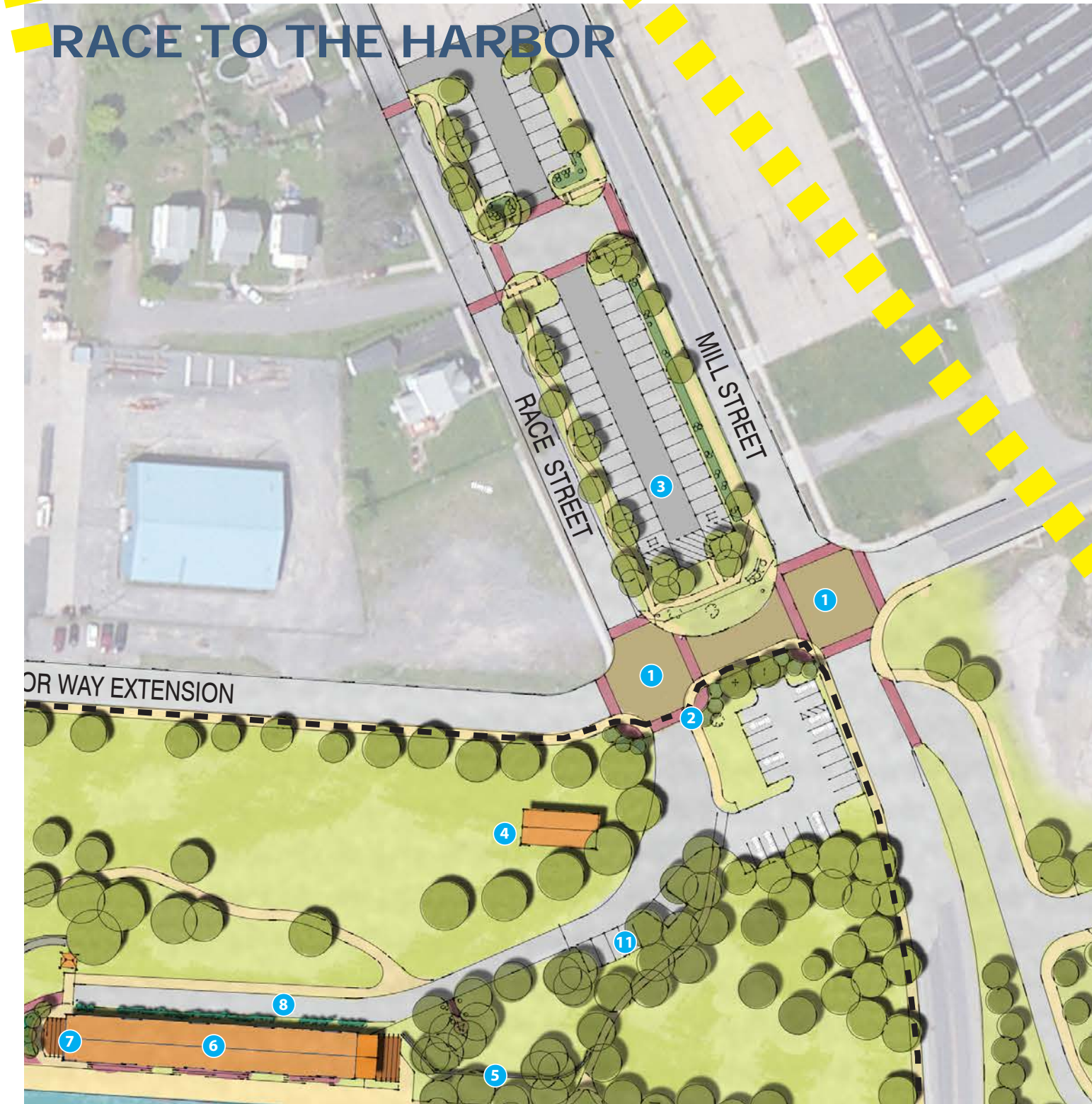
\$780,000 EPF GRANT

BELLAMY HARBOR PARK



**\$180,000 CANOE & KAYAK LAUNCH
\$350,000 TERMINAL RESTORATION**

RACE TO THE HARBOR



\$475,000 GRANT

ROD MILL SITE



\$660,000 GREEN INFRASTRUCTURE

NAVIGATION CENTER

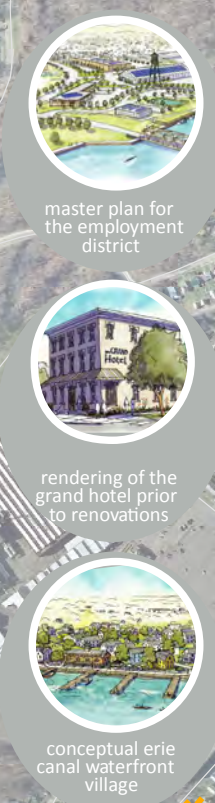
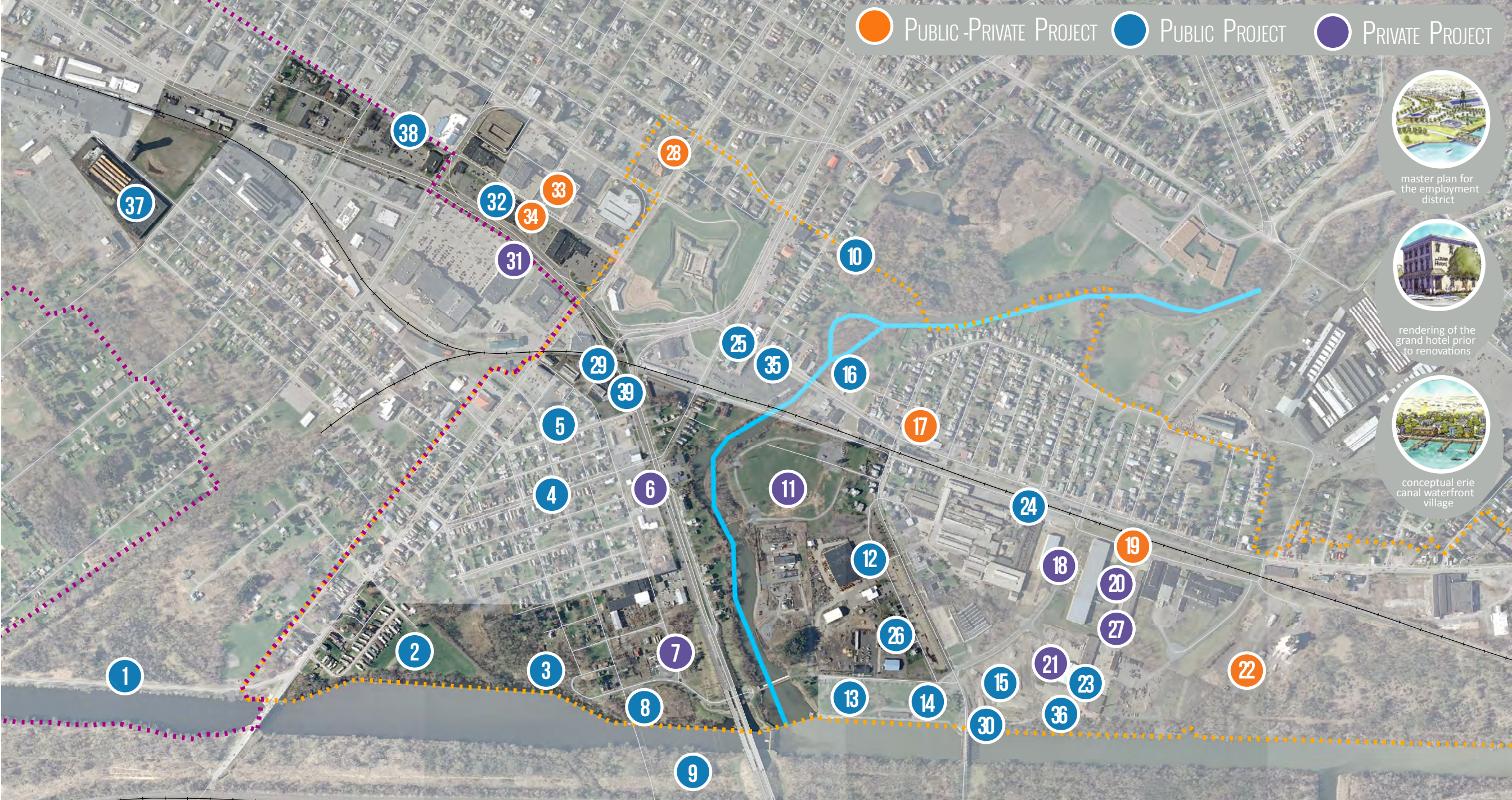


\$519,000 NAVIGATION CENTER

Please use the post-it notes provided to identify key issues and opportunities in the study areas below.

Place the post-it in the location where the issue/opportunity exists.





<div>1</div> <div>Canal Trail Gap Project</div> <div>\$50 K</div>	<div>6</div> <div>Risen Foods Bakery</div> <div>\$750 K</div>	<div>11</div> <div>MGP Cleanup Activities</div> <div>\$7 MIL</div>	<div>16</div> <div>Little Italy Business District Rehab.</div> <div>\$250 K</div>	<div>21</div> <div>Rod Mill Indoor Market</div> <div>\$250 K</div>	<div>26</div> <div>Mill St./ Bellamy GIGP</div> <div>\$450 K</div>	<div>31</div> <div>Staples Building Development</div> <div></div>	<div>36</div> <div>Bellamy Harbor Site Improvements</div> <div>\$500 K</div>
<div>2</div> <div>Waterfront Village Project</div> <div>\$780 K</div>	<div>7</div> <div>Finish Line</div> <div>\$150 K</div>	<div>12</div> <div>DPW Reuse Strategy</div> <div>\$40 K</div>	<div>17</div> <div>The Grand Restoration</div> <div>\$750 K</div>	<div>22</div> <div>Enviromotive USA</div> <div>\$750 K</div>	<div>27</div> <div>AAS Expansion #2</div> <div></div>	<div>32</div> <div>Capitol Steps GIGP</div> <div>\$440 K</div>	<div>37</div> <div>Rome Cable</div> <div>\$8.3 MIL</div>
<div>3</div> <div>NYS Canalway Trail Project</div> <div>\$2 MIL</div>	<div>8</div> <div>Brownfield Cleanup Activities</div> <div>\$500 K</div>	<div>13</div> <div>Canoe & Kayak Launch</div> <div>\$160 K</div>	<div>18</div> <div>MSP Industrial Facility</div> <div>\$1.5 MIL</div>	<div>23</div> <div>Rod Mill Green Infra. Project</div> <div>\$660 K</div>	<div>28</div> <div>Old City Hall Restoration</div> <div>\$1.4 MIL</div>	<div>33</div> <div>Capitol Theatre Rehab</div> <div>\$1.6 MIL</div>	<div>38</div> <div>Smart Walk</div> <div>\$450 K</div>
<div>4</div> <div>Depeyster Street Reconstruction</div> <div>\$250 K</div>	<div>9</div> <div>Brownfield Cleanup Activities</div> <div>\$100 K</div>	<div>14</div> <div>Bellamy Harbor Ter minal Restoration</div> <div>\$350 K</div>	<div>19</div> <div>American Alloy Steel (AAS)</div> <div>\$6.5 MIL</div>	<div>24</div> <div>Little Italy Colon nade Green Infra.</div> <div>\$452 K</div>	<div>29</div> <div>Rome Turney EPA Cleanup</div> <div>\$200 K</div>	<div>34</div> <div>REACH Center</div> <div>\$1.5 MIL</div>	<div>39</div> <div>Rome Turney RESTORE</div> <div>\$500 K</div>
<div>5</div> <div>Neighborhood Stabilization Prgm.</div> <div>\$550 K</div>	<div>10</div> <div>Mohawk River Trail Development</div> <div>\$1 MIL</div>	<div>15</div> <div>Navigation Center</div> <div>\$519 K</div>	<div>20</div> <div>AAS Expansion</div> <div>\$1.5 MIL</div>	<div>25</div> <div>NYS DOT TAP</div> <div>\$350 K</div>	<div>30</div> <div>NYS Canal Boat Launch</div> <div>\$225 K</div>	<div>35</div> <div>East Dominick Streetscape</div> <div>\$1.0 MIL</div> <div></div>	