



**ROME**  
*the copper city*



Morton  
Archaeological  
Research Services

# ROME WATERFRONT VILLAGE

## INFRASTRUCTURE IMPROVEMENT PLAN

# Project Overview

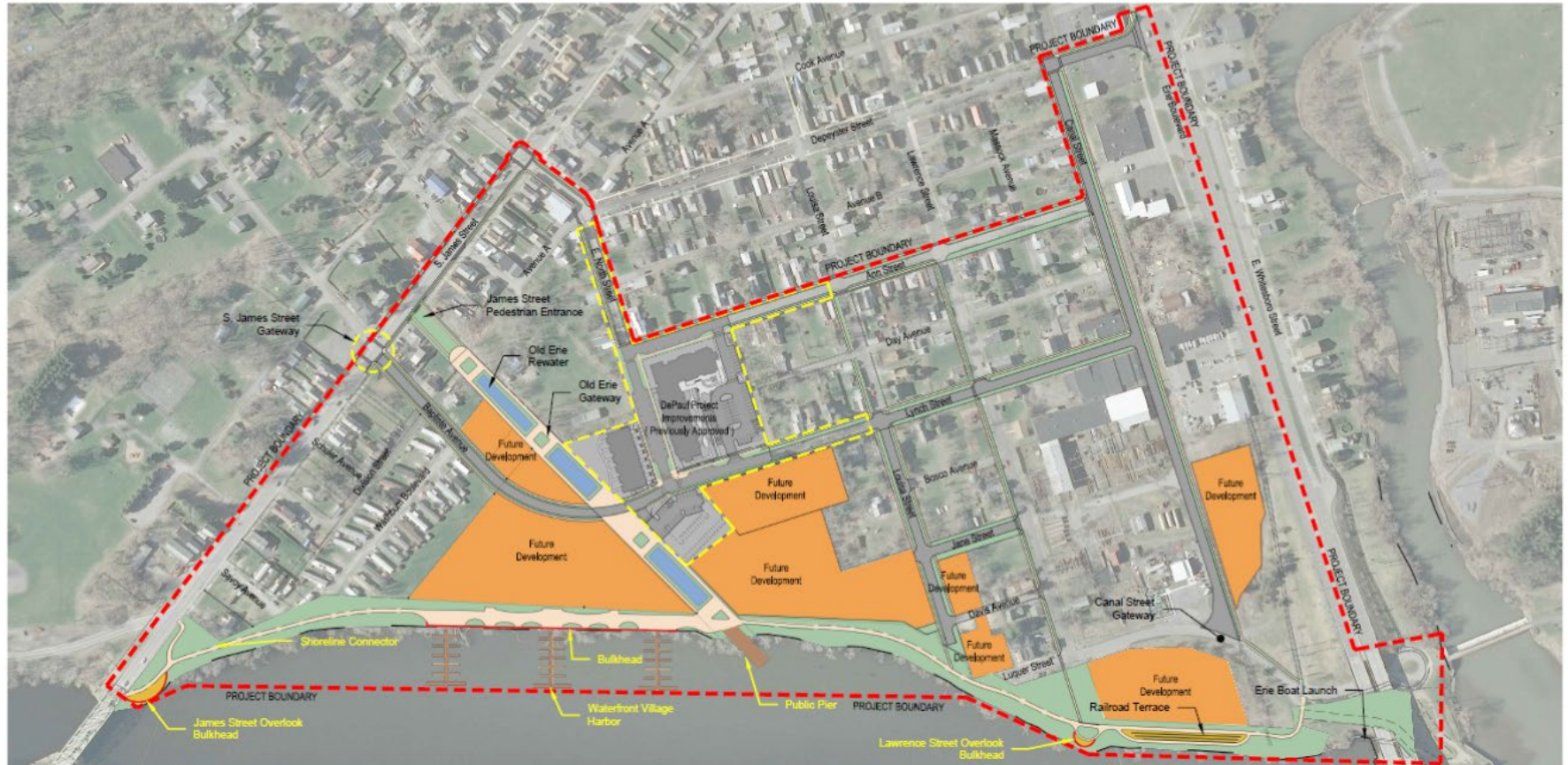
- Project includes:
  - Streetscape Enhancements (sidewalks, streetlights, street trees, etc.)
  - Infrastructure Improvements (road & utility extensions)
  - Waterfront Improvements (trail extension, public pier, boat launch, docks and other amenities)

Morton Archaeological  
Research Services



# Waterfront Village

## Infrastructure Improvement Plan



### STREETSCAPE IMPROVEMENTS SCHEDULE:

#### **S. JAMES STREET:**

- BAPTISTE TO S. NORTH STREET
- NEW ORNAMENTAL LIGHTING AND STREET TREES - BOTH SIDES

#### **BAPTISTE AVENUE:**

- JAMES STREET TO DEPAUL SITE
- NEW ORNAMENTAL LIGHTING AND STREET TREES - BOTH SIDES
- NEW PAVEMENT, SIDEWALKS AND GRANITE CURBS - BOTH SIDES

#### **ANN STREET:**

- DEPAUL SITE TO LAWRENCE STREET
- NEW SIDEWALKS AND CURBS WHERE NEEDED - BOTH SIDES
- LAWRENCE STREET TO CANAL
- NEW SIDEWALKS AND CURBS - NORTH SIDE

#### **LYNCH STREET:**

- DEPAUL SITE TO CANAL STREET
- NEW ORNAMENTAL LIGHTING AND STREET TREES - BOTH SIDES
- LAWRENCE STREET TO CANAL
- NEW SIDEWALKS AND CURBS WHERE NEEDED - NORTH SIDE
- DEPAUL SITE TO LAWRENCE STREET
- NEW SIDEWALKS AND CURBS WHERE NEEDED - BOTH SIDES
- LOUISA STREET TO CANAL STREET
- NEW PAVEMENT OVERLAY

#### **CANAL STREET:**

- DEPEYSTER STREET TO LYNCH STREET
- NEW ORNAMENTAL LIGHTING AND STREET TREES - BOTH SIDES
- DEPEYSTER STREET TO LYNCH STREET
- NEW SIDEWALKS AND CURBS WHERE NEEDED - BOTH SIDES

#### **CANAL STREET (CONT.):**

- DEPEYSTER STREET TO LYNCH STREET
- NEW PAVEMENT OVERLAY

#### **CANAL STREET (FUTURE):**

- LYNCH STREET TO LIQUOR STREET
- NEW ORNAMENTAL LIGHTING AND STREET TREES - BOTH SIDES
- LYNCH STREET TO LIQUOR STREET
- NEW SIDEWALK WHERE NEEDED - EAST SIDE
- LYNCH STREET TO LIQUOR STREET
- NEW CURBS WHERE NEEDED - BOTH SIDES
- LYNCH STREET TO LIQUOR STREET
- NEW PAVEMENT OVERLAY

#### **DEPEYSTER STREET:**

- CANAL STREET TO ERIE BOULEVARD
- NEW ORNAMENTAL LIGHTING AND STREET TREES - BOTH SIDES
- NEW SIDEWALKS - NORTH SIDE
- NEW CURBS WHERE NEEDED - BOTH SIDES
- NEW PAVEMENT OVERLAY

#### **JANE STREET:**

- LOUISA STREET TO LAWRENCE STREET
- NEW STREET TREES - BOTH SIDES
- NEW SIDEWALKS AND CURBS - BOTH SIDES
- NEW PAVEMENT

#### **LOUISA STREET:**

- LYNCH STREET TO DAVIS AVENUE
- NEW ORNAMENTAL LIGHTING AND STREET TREES - BOTH SIDES
- NEW SIDEWALKS AND CURBS - BOTH SIDES
- NEW PAVEMENT

#### **LAWRENCE STREET:**

- ANN STREET TO LIQUOR STREET
- NEW SIDEWALKS AND CURBS WHERE NEEDED WEST SIDE

#### **E. NORTH STREET:**

- DEPAUL SITE TO S. JAMES STREET
- NEW ORNAMENTAL LIGHTING AND STREET TREES - BOTH SIDES
- NEW SIDEWALKS AND CURBS WHERE NEEDED - BOTH SIDES



Morton Archaeological  
Research Services



# Waterfront Village

## Canal Waterfront Concept Plan



Morton Archaeological  
Research Services



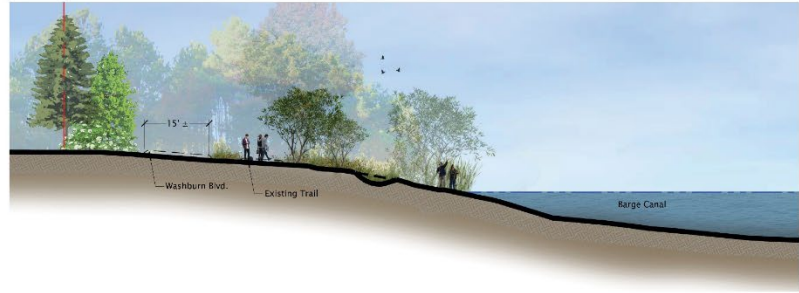
# Waterfront Village

## Canal Waterfront Concept Sections

SECTION A-A' James Street Overlook



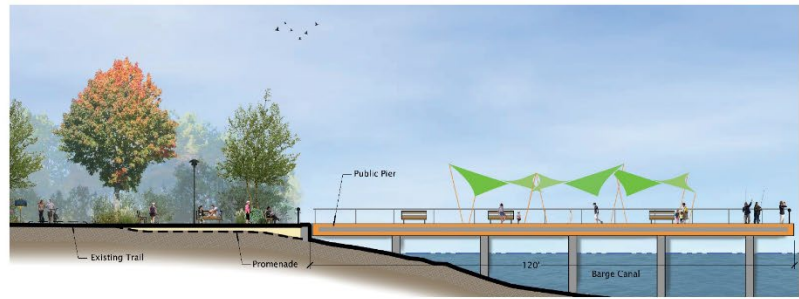
SECTION B-B' Shoreline Connector



SECTION C-C' Waterfront Village



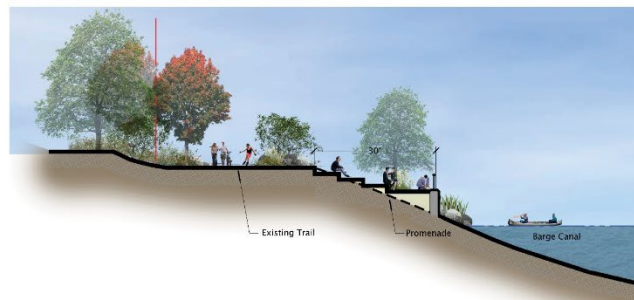
SECTION D-D' Public Pier



SECTION E-E' Old Erie Rewater



SECTION F-F' Railroad Terrace

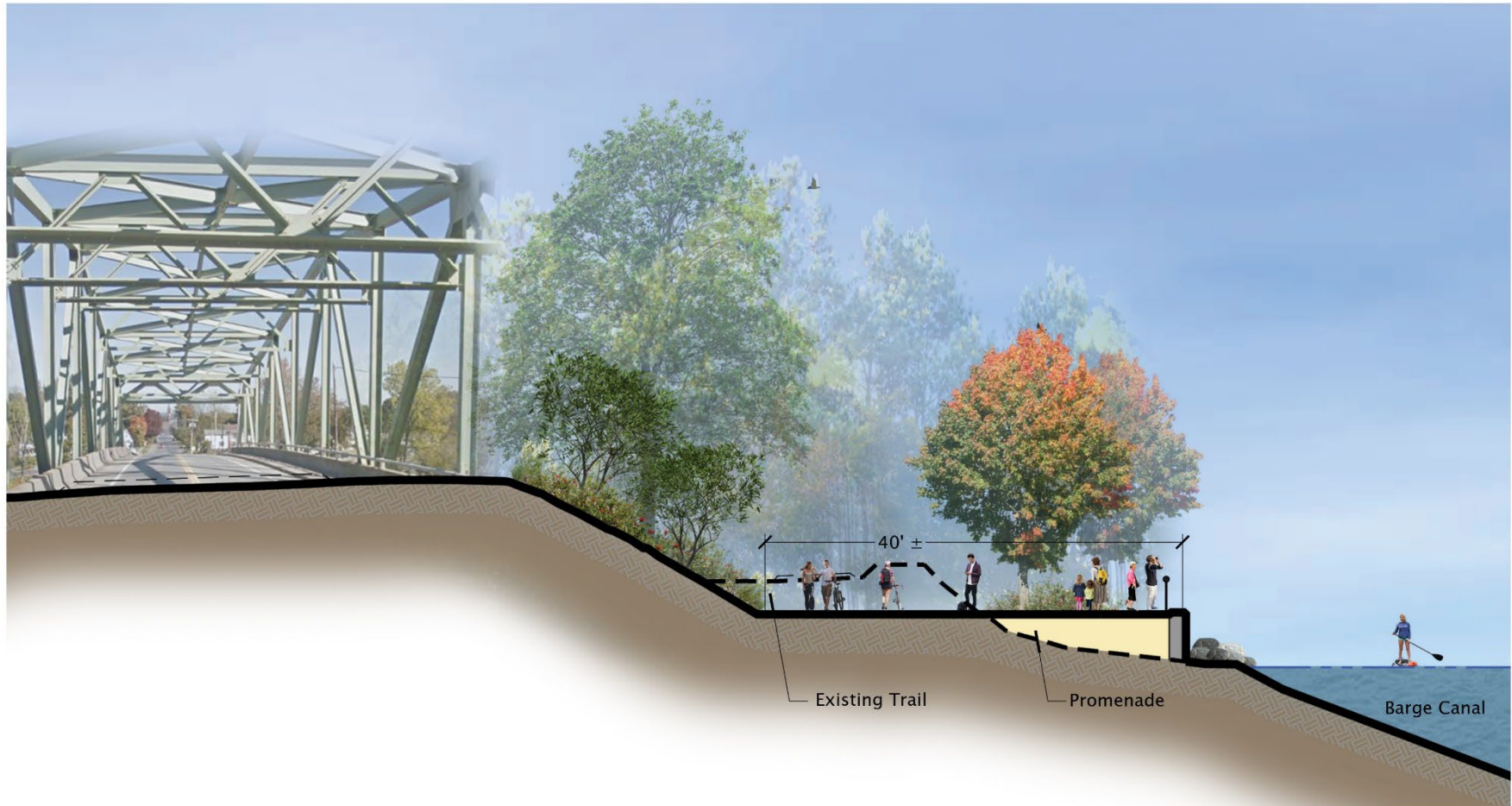


Morton Archaeological  
Research Services

# Waterfront Village

## Canal Waterfront Concept Sections

### SECTION A-A' James Street Overlook



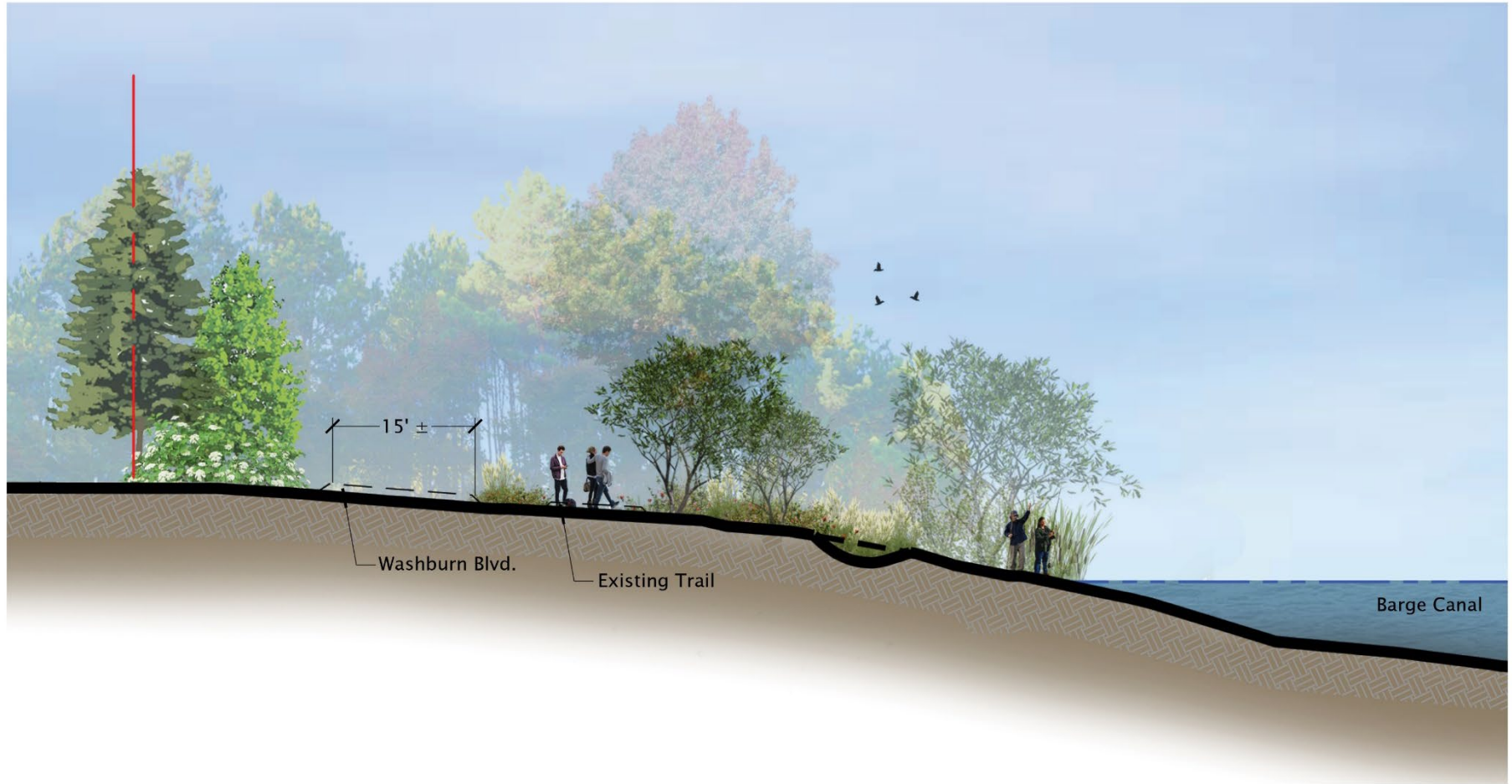
Morton Archaeological  
Research Services



# Waterfront Village

## Canal Waterfront Concept Sections

### SECTION B-B' Alt 1 Shoreline Connector

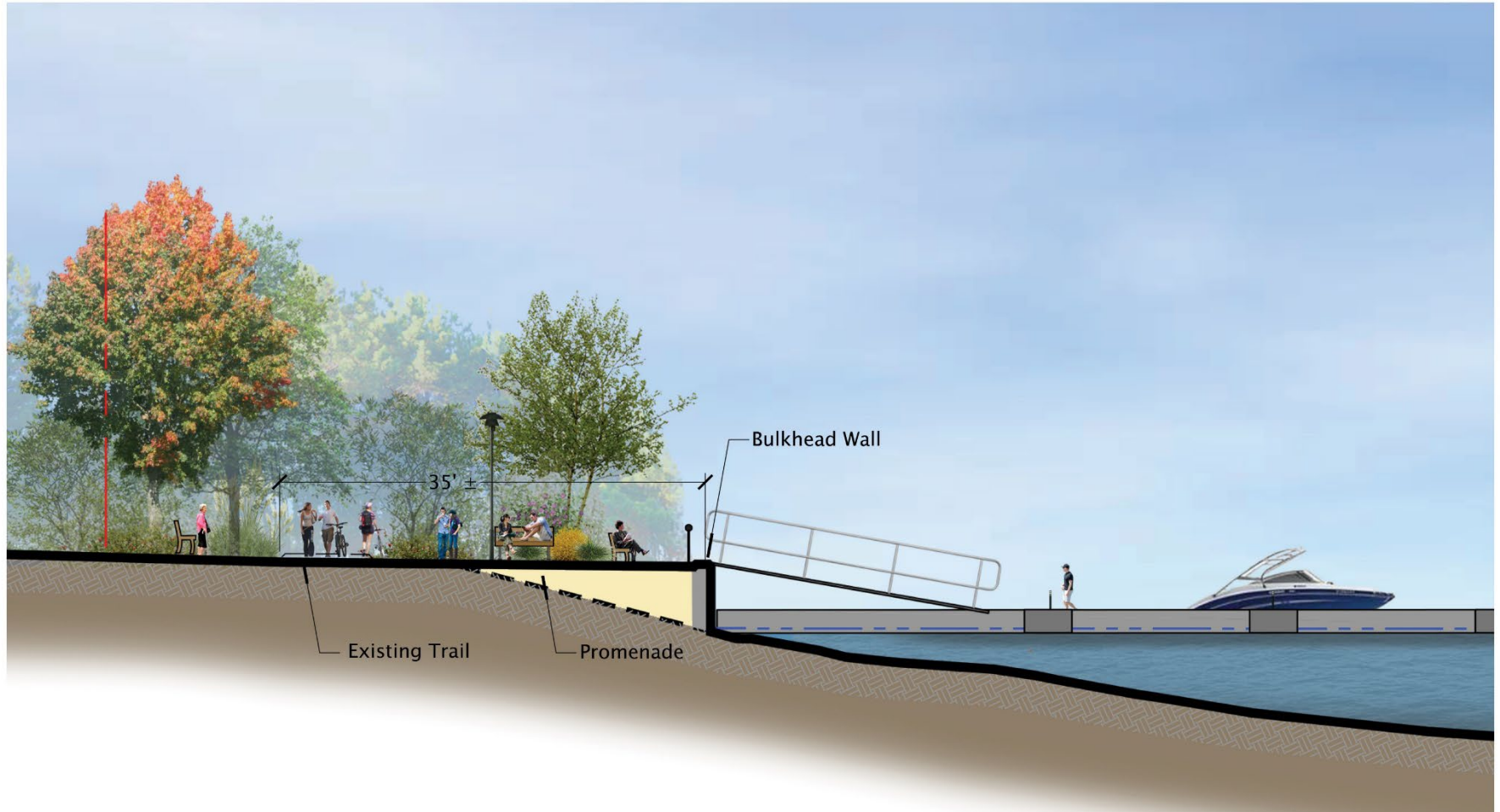


Morton Archaeological  
Research Services

# Waterfront Village

## Canal Waterfront Concept Sections

### SECTION C-C' Waterfront Village



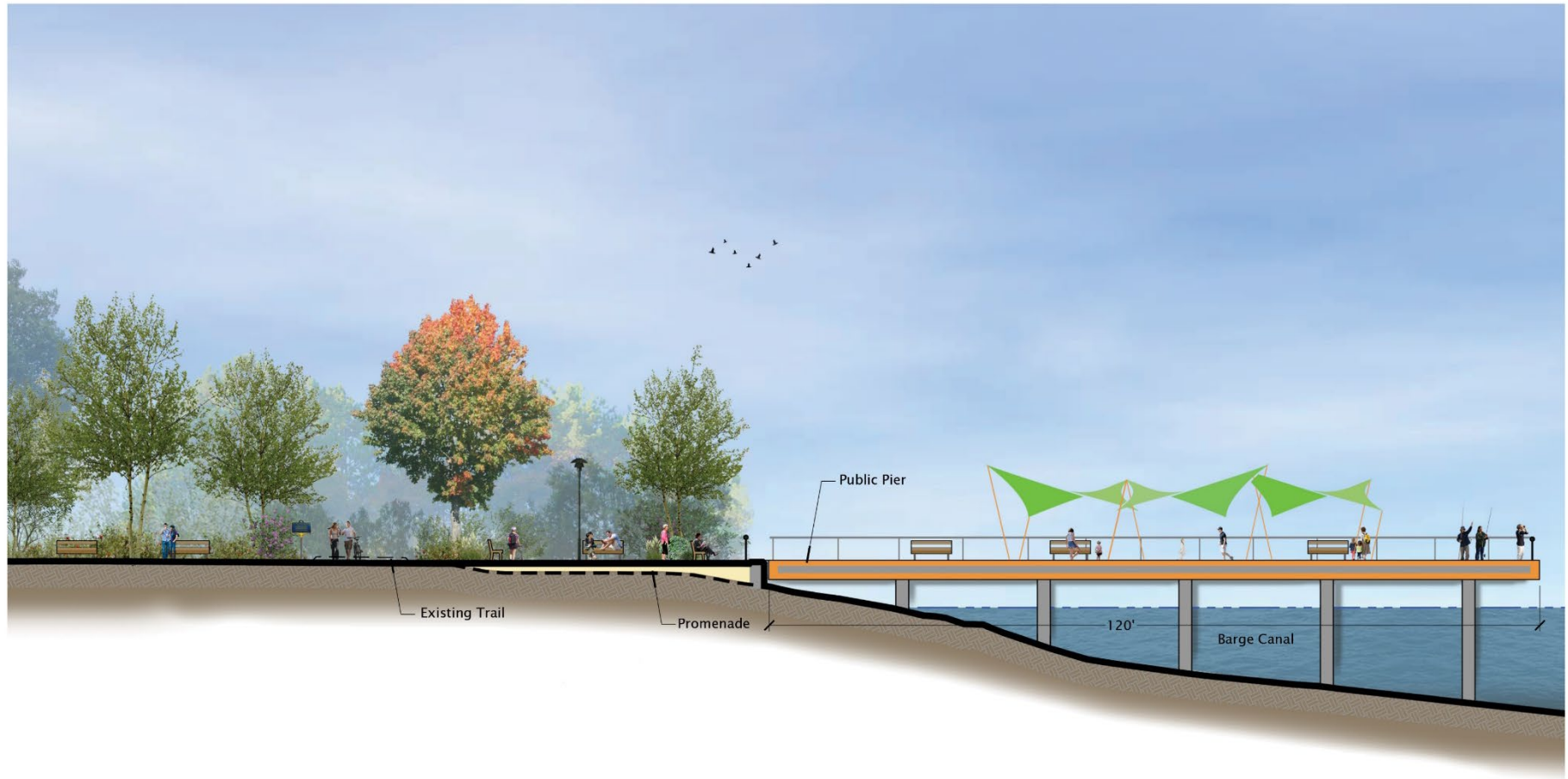
Morton Archaeological  
Research Services



# Waterfront Village

## Canal Waterfront Concept Sections

### SECTION D-D' Public Pier

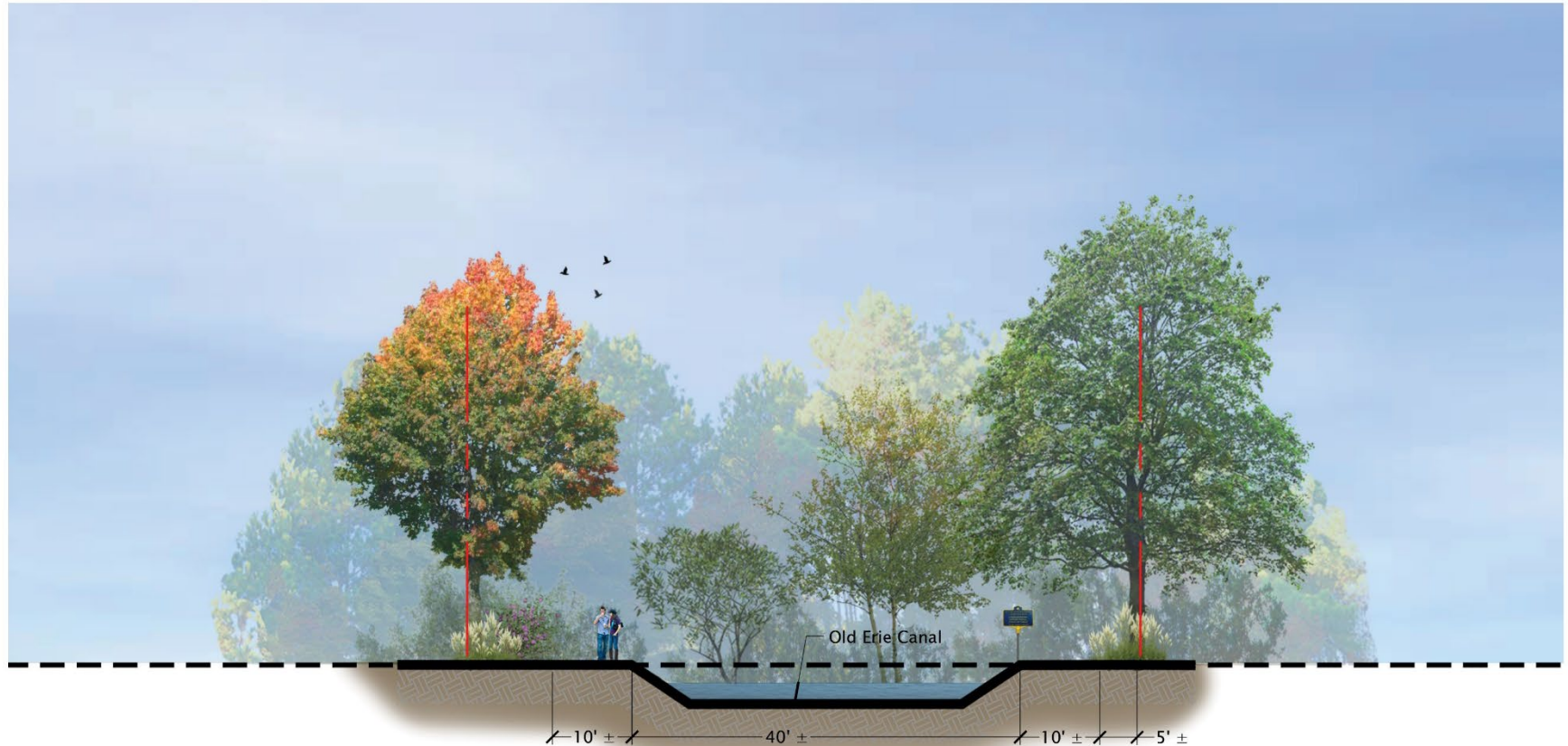


Morton Archaeological  
Research Services

# Waterfront Village

## Canal Waterfront Concept Sections

### SECTION E1-E1' Canal Walk



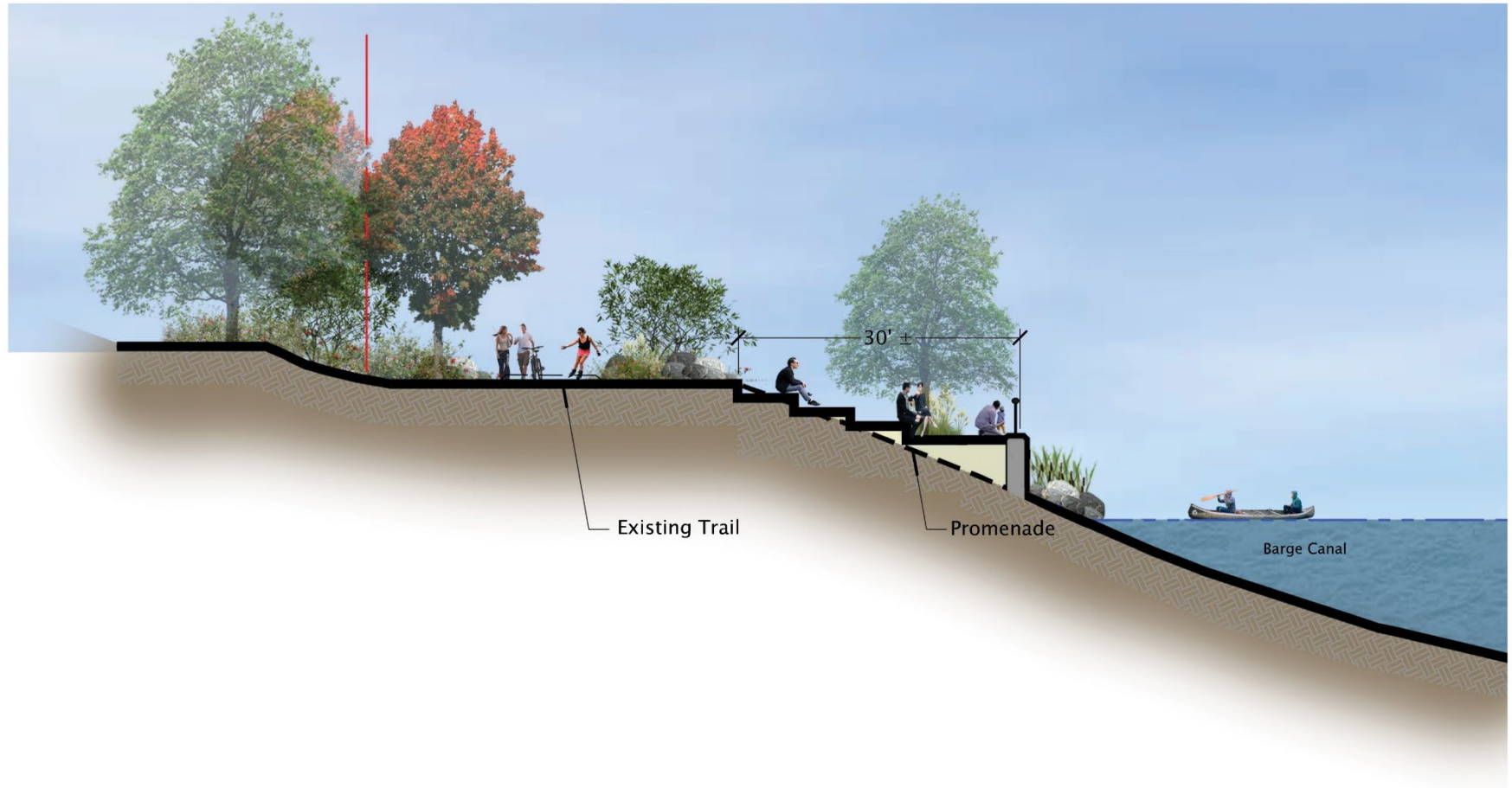
Morton Archaeological  
Research Services



# Waterfront Village

## Canal Waterfront Concept Sections

### SECTION F-F' Railroad Terrace



Morton Archaeological  
Research Services

# Waterfront Village

## Canal Waterfront Concept Sections

### SECTION G-G' Erie Boat Launch



Morton Archaeological  
Research Services



# Waterfront Village

## Archaeology

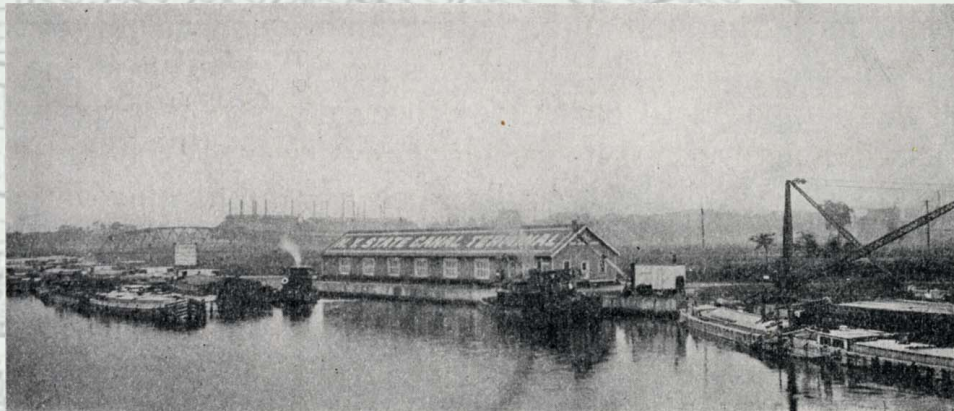
**National Historic Preservation Act, 1966 (NYS Historic Preservation Act 1980):  
Federal and State Agencies must consider impacts by undertakings (projects) to  
historic properties.**

If there is Federal or State funding, Federal or State permits, or  
the project run by Federal or State agency: Section 106 or  
Section 14.09 applies

**Historic properties are: buildings, structures, archaeological sites**

- **Listed on the National Register**
- **Eligible to be listed on the National Register**

**Examples: the New York State Barge Canal System (listed)**



Morton Archaeological  
Research Services



# Waterfront Village

## Archaeology

In the Section 106/Section 14.09 Process, Archaeologists:

Identify historic properties in the project area



How?:

- Background research
- Field survey

Assess the nature of the project effects on historic properties

Propose a solution to resolve any adverse effects



Morton Archaeological  
Research Services



# Waterfront Village

## Archaeology

Site(s) Present?	Project will Impact Site(s)?	Determination
No historic property present <sup>#</sup>	N/A	No Effect
Historic property present	No impact by Project	No Effect
Historic property present	Impact by Project—but impact does not meet Criteria of Adverse Effect*	No Adverse Effect
Historic property present	Impact by Project—impact meets Criteria of Adverse Effect	Adverse Effect—Go to Mitigation

**\*Criteria of Adverse Effect:** will the project alter (directly or indirectly) any of the characteristics that made the site NR eligible—impact site integrity ?

**#**Only buildings and archaeological sites that are NR eligible or listed are considered historic properties under Section 106/Section 14.09

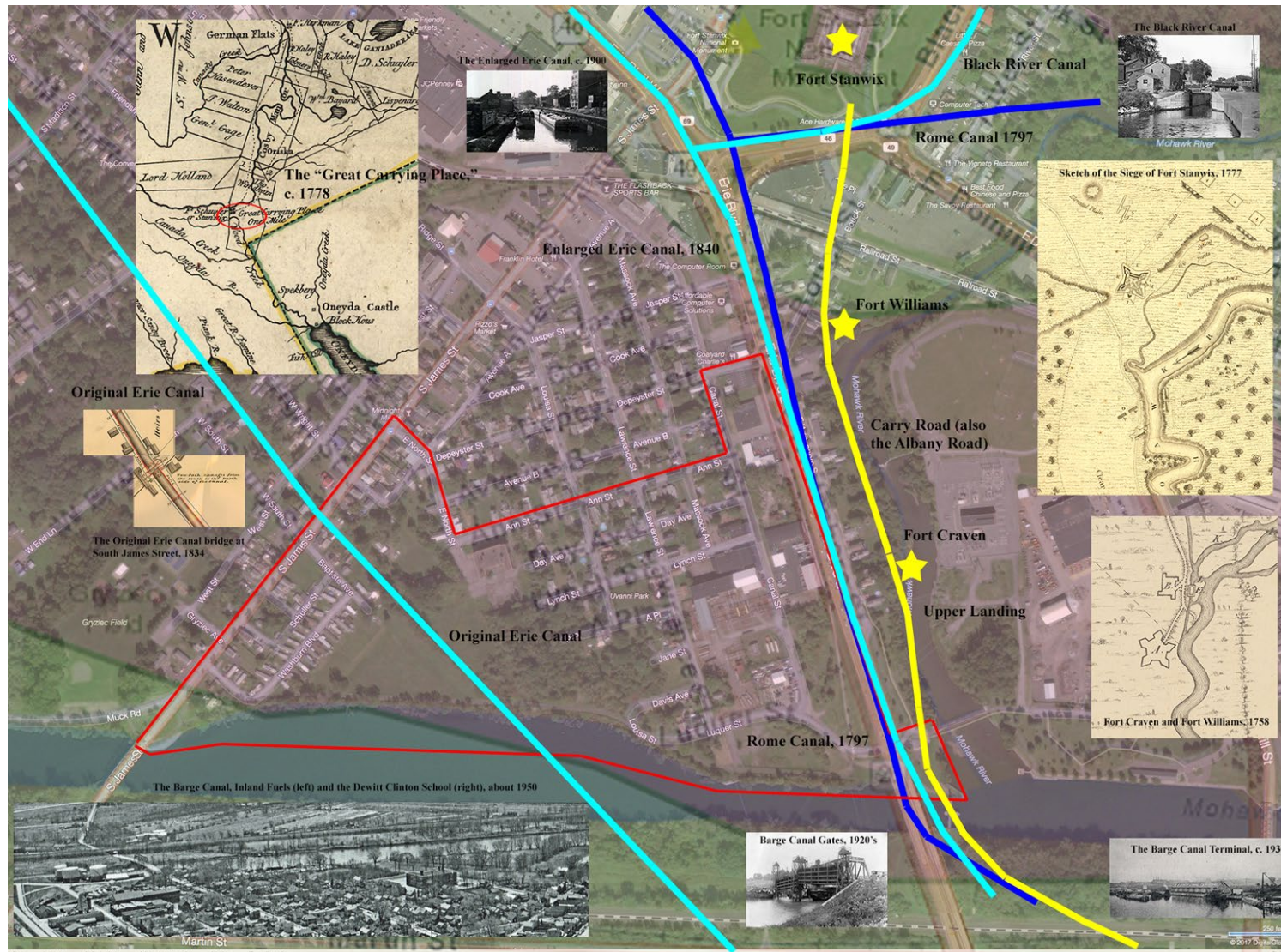


Morton Archaeological  
Research Services



# Waterfront Village

## Archaeology

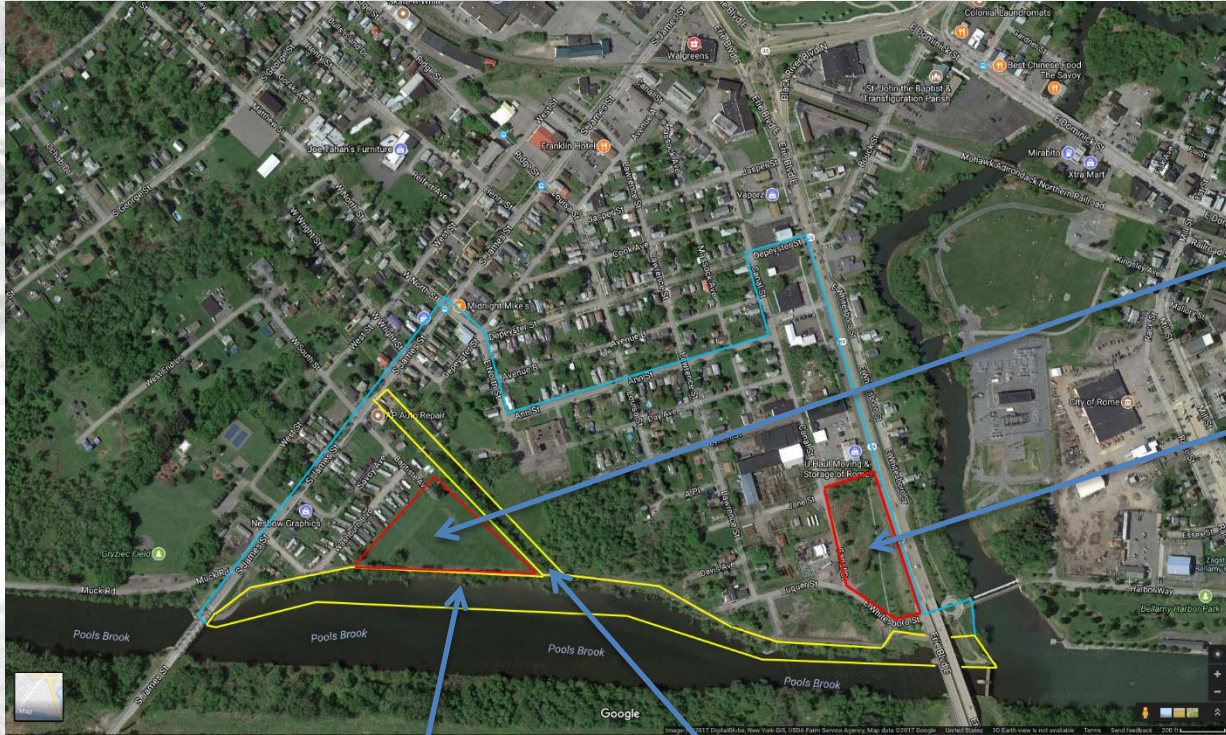


Morton Archaeological  
Research Services



# Waterfront Village

## Archaeology



Two areas have deep fill, and are archaeologically sensitive:

Triangular parcel south of the Original Erie Canal

Undeveloped parcel south of Rome Iron Works and west of Enlarged Erie Canal

Resources may exist—recommend additional testing prior to construction or monitoring during construction

Identified 2 NR listed/eligible historic properties in the project area:

**NYS Barge Canal**

**Original Erie Canal**

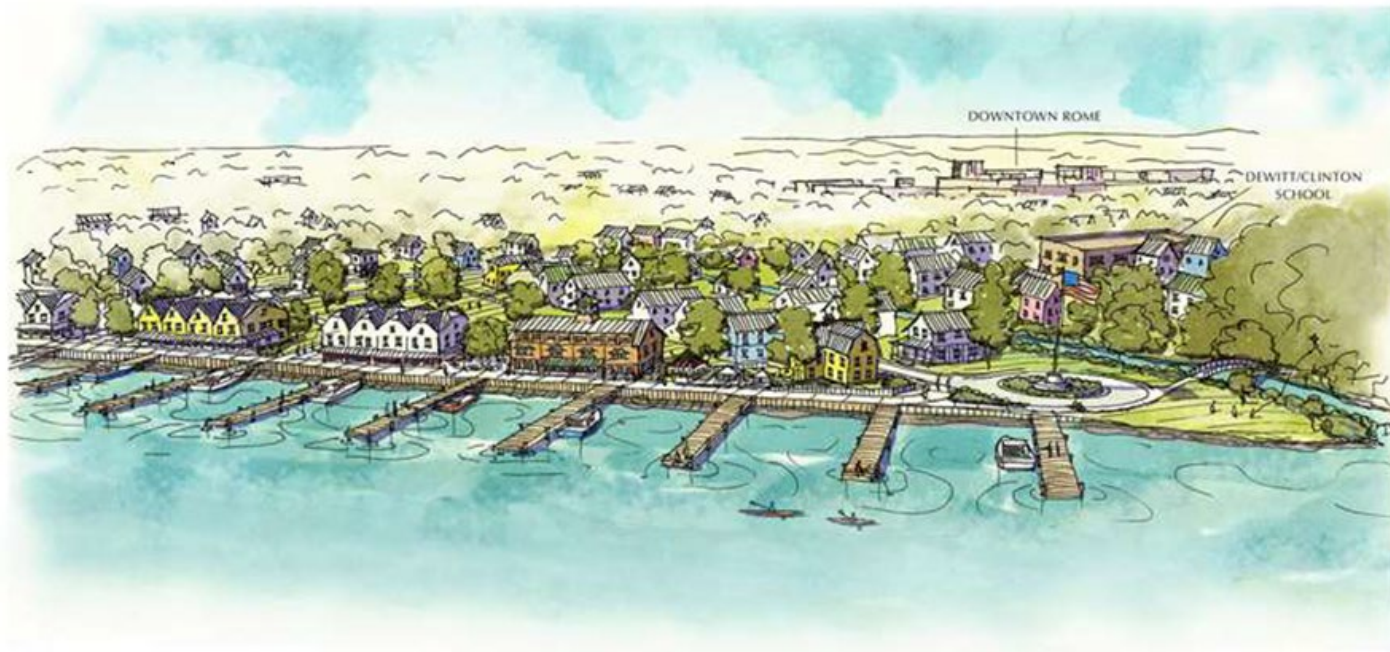
Consultation with the State Historic Preservation Office (SHPO), anticipate that:

- No Adverse Effect for Barge Canal
  - No Adverse Effect with conditions, Original Erie Canal
- Additional research, prior to construction, or monitoring during construction (or both)



Morton Archaeological  
Research Services





QUESTIONS?

